

Series RLH/1

Set 3

कोड नं. 32/1/3
Code No.

रोल नं.

Roll No.

--	--	--	--	--	--	--	--	--	--

परीक्षार्थी कोड को उत्तर-पुस्तिका के मुख-पृष्ठ पर अवश्य लिखें।

Candidates must write the Code on the title page of the answer-book.

- कृपया जाँच कर लें कि इस प्रश्न-पत्र में मुद्रित पृष्ठ 11 + 2 मानचित्र हैं।
- प्रश्न-पत्र में दाहिने हाथ की ओर दिए गए कोड नम्बर को छात्र उत्तर-पुस्तिका के मुख-पृष्ठ पर लिखें।
- कृपया जाँच कर लें कि इस प्रश्न-पत्र में 30 प्रश्न हैं।
- कृपया प्रश्न का उत्तर लिखना शुरू करने से पहले, प्रश्न का क्रमांक अवश्य लिखें।
- इस प्रश्न-पत्र को पढ़ने के लिए 15 मिनट का समय दिया गया है। प्रश्न-पत्र का वितरण पूर्वाह्न में 10:15 बजे किया जाएगा। 10:15 बजे से 10:30 बजे तक छात्र केवल प्रश्न-पत्र को पढ़ेंगे और इस अवधि के दौरान वे उत्तर-पुस्तिका पर कोई उत्तर नहीं लिखेंगे।
- Please check that this question paper contains 11 printed pages + 2 Maps.
- Code number given on the right hand side of the question paper should be written on the title page of the answer-book by the candidate.
- Please check that this question paper contains 30 questions.
- Please write down the Serial Number of the question before attempting it.
- 15 minute time has been allotted to read this question paper. The question paper will be distributed at 10.15 a.m. From 10.15 a.m. to 10.30 a.m., the students will read the question paper only and will not write any answer on the answer-book during this period.

संकलित परीक्षा-II

SUMMATIVE ASSESSMENT-II

सामाजिक विज्ञान

SOCIAL SCIENCE

निर्धारित समय : 3 घण्टे]

Time allowed : 3 hours]

[अधिकतम अंक : 90

[Maximum marks : 90

[P.T.O.]

सामान्य निर्देश:

- (i) इस प्रश्न-पत्र में कुल 30 प्रश्न हैं। सभी प्रश्न अनिवार्य हैं।
- (ii) प्रत्येक प्रश्न के सामने उसके अंक दिए गए हैं।
- (iii) प्रश्न सं. 1-8 अतिलघूत्तर प्रश्न हैं। प्रत्येक प्रश्न के लिए 1 अंक निर्धारित है।
- (iv) प्रश्न सं. 9-20, 3 अंक वाले प्रश्न हैं। इनमें प्रत्येक उत्तर 80 शब्दों से अधिक न हो।
- (v) प्रश्न सं. 21-28, 5 अंक वाले प्रश्न हैं। इनमें प्रत्येक उत्तर 100 शब्दों से अधिक न हो।
- (vi) प्रश्न सं. 29-30 इतिहास और भूगोल के मानचित्र वाले प्रश्न, प्रत्येक 3 अंक के हैं। इन्हें पूरा करने के बाद मानचित्र को उत्तर-पुस्तिका के अंदर नत्थी कर दीजिए।

General Instructions :

- (i) The question paper has 30 questions in all. All questions are compulsory.
- (ii) Marks are indicated against each question.
- (iii) Questions from serial number 1 to 8 are very short answer questions. Each question carries 1 mark.
- (iv) Questions from serial number 9 to 20 are 3 mark questions. Answer of these questions should not exceed 80 words each.
- (v) Questions from serial number 21 to 28 are 5 mark questions. Answer of these questions should not exceed 100 words each.
- (vi) Question number 29 to 30 are map questions of 3 marks each from History and Geography both. After completion, attach the map inside your answer-book.



1. बोलिविया में 'फेडेकोर' संगठन की मुख्य भूमिका क्या थी? 1

What was the main role of 'FEDICOR' organisation in Bolivia ?

2. महा राजमार्गों के विकसित करने का प्रमुख उद्देश्य क्या है? 1

What is the major objective to develop Super Highways?

3. पश्चिम बंगाल की किन्हीं दो क्षेत्रीय पार्टियों के नाम लिखिए। $\frac{1}{2} + \frac{1}{2} = 1$

Name any two regional parties of West Bengal.

4. यूरोप में फ्रान्सीसी क्रांति से राजनीतिक और संवैधानिक परिदृश्य में हुआ प्रमुख बदलाव क्या था? 1

अथवा

समुद्री सिल्क रूट वियतनाम के लिए किस प्रकार उपयोगी था?

What was the major change that occurred in the political and constitutional senerio due to French Revolution in Europe ?

Or

How was the maritime silk route useful for Vietnam ?

5. स्वतंत्रता के बाद भारत सरकार ने विदेश व्यापार एवं विदेशी निवेश पर प्रतिबंध क्यों लगाया था? कोई एक कारण लिखिए। 1

Why had the Indian Government put barrier to foreign trade and foreign investment after independence ? State any one reason.

6. भारत में प्रतिवर्ष 'राष्ट्रीय उपभोक्ता दिवस' किस दिन मनाया जाता है ? 1

On which day is 'National Consumer's day' celebrated every year in India?

7. बिजली का सामान खरीदते समय आप कौन सा शब्द-चिह्न (लोगो) देखना चाहेंगे? 1

Which logo would you like to see for purchasing electrical goods ?

8. यदि किसी राजनीतिक दल के सभी निर्णय एक परिवार के लोगों द्वारा किए जाते हैं तथा अन्य सदस्यों की अवहेलना की जाती है तो उस दल के सामने कौन सी चुनौती है? 1

If all the decisions of a political party are made by a single family and all other members are neglected, than what challenge is being faced by that party ?

9. हाल के वर्षों में हमारे बाजार किस प्रकार पूर्णतः परिवर्तित हो गए हैं? उदाहरणों सहित व्याख्या कीजिए। 3×1=3

In recent years how our markets have been transformed? Explain with examples.

10. महात्मा गाँधीजी ने फरवरी 1922 में 'असहयोग आंदोलन' को वापस लेने का निर्णय क्यों किया ? कारणों को स्पष्ट कीजिए। 3×1=3

Why did Mahatma Gandhiji decide to withdraw the Non-Cooperation Movement in February 1922 ? Explain the reasons.

11. उन परिस्थितियों का वर्णन कीजिए, जिनमें बाजार उचित तरीके से कार्य नहीं करते हैं। 3

Describe the conditions in which markets do not work in a fair manner.

12. “सारी दुनिया में पार्टियों के भीतर आन्तरिक लोकतंत्र का न होना एक बड़ी चुनौती है।” इस कथन का विश्लेषण कीजिए। 3

“Lack of internal democracy within parties is the major challenge to political parties all over the world.” Analyse the statement.

13. “भारतीय अर्थव्यवस्था में वस्त्र उद्योग अपना अलग महत्व रखता है।” उपयुक्त तर्कों से कथन की पुष्टि कीजिए। 3×1=3

“Textile industry occupies a unique position in Indian economy.” Support the statement with appropriate arguments.

14. बहुदलीय व्यवस्था क्या है? भारत ने बहुदलीय व्यवस्था को क्यों अपनाया है? स्पष्ट कीजिए। 1+2=3

What is a multi-party system ? Why has India adopted a multi-party system ? Explain.

15. लोकतंत्र की चुनौतियाँ किस प्रकार राजनीतिक सुधारों की संभावनाओं से जुड़ी हैं? स्पष्ट कीजिए। 3

How are the challenges to democracy linked to the possibility of political reforms? Explain.



16. खनन की गतिविधि किस प्रकार खनिकों के स्वास्थ्य तथा पर्यावरण के लिए घातक है? स्पष्ट कीजिए। 3

How is the mining activity injurious to the health of the miners and environment? Explain.

17. वर्तमान ऊर्जा के संकट में आप ऊर्जा को बचाने के लिए अपने स्तर पर कौन से कदम उठाएंगे? 3×1=3

In the present day energy crisis what steps will you like to take for saving energy?

18. बैंकों और सहकारी समितियों को अपनी गतिविधियों को ग्रामीण क्षेत्रों में बढ़ाने की आवश्यकता क्यों है? स्पष्ट कीजिए। 3

Why is it necessary for the banks and cooperative societies to increase their lending facilities in rural areas? Explain.

19. फ्रान्सीसी क्रान्ति की ऐसी घटनाओं का वर्णन कीजिए, जिन्होंने यूरोप के अन्य भागों में रहने वाले लोगों को प्रभावित किया। 3

अथवा

वियतनाम में 1926 में साइगॉन नेटिव गर्ल्स स्कूल में हुए एक बड़े आंदोलन का वर्णन कीजिए।

Describe the events of French Revolution which had influenced the people belonging to other parts of Europe.

Or

Describe the major protest erupted in Saigon Native Girls School in 1926, in Vietnam.



20. “कांग्रेस अपने कार्यक्रम में औद्योगिक श्रमिकों की माँगों को समाहित करने में हिचकिचा रही थी।” कारणों का विश्लेषण कीजिए। 3

“The Congress was reluctant to include the demands of industrial workers in its programme of struggle.” Analyse the reasons.

21. ब्रिटेन के एकीकरण की प्रक्रिया का वर्णन कीजिए। 5

अथवा

वियतनाम में ईसाई धर्म के फैलाव के विरुद्ध 1868 में हुए ‘विद्वानों के विद्रोह’ का वर्णन कीजिए।

Describe the process of Unification of Britain.

Or

Describe the ‘Scholar’s Revolt’ of 1868 against the spread of Christianity in Vietnam.

22. राजनीतिक दलों के किन्हीं पाँच प्रमुख कार्यों का वर्णन कीजिए। 5×1=5

Describe any five major functions of political parties.

23. किसी उद्योग की स्थिति को प्रभावित करने वाले किन्हीं पाँच कारकों की व्याख्या कीजिए। 5×1=5

Explain any five factors affecting the location of a industry.

24. बड़ी-बड़ी कम्पनियाँ किस प्रकार चालाकी से बाजार को प्रभावित करती हैं? उदाहरण देकर स्पष्ट कीजिए। 5×1=5

How do the large companies manipulate the market? Explain with examples.

25. हमारे देश में रेल परिवहन के वितरण को प्रभावित करने वाले भू-आकृतिक और आर्थिक कारणों का विश्लेषण कीजिए। $5 \times 1 = 5$

Analyse the physiographic and economic factors that have influenced the distribution pattern of the railway network in our country.

26. “राष्ट्रवाद की भावना तब पनपती है, जब लोग यह महसूस करने लगते हैं कि वे एक ही राष्ट्र के अंग हैं।” इस कथन की पुष्टि कीजिए। 5

“Nationalism spreads when people begin to believe that they are all part of the same nation.” Support the statement.

27. स्वयं सहायता समूह क्या हैं? ये किस प्रकार कार्य करते हैं? स्पष्ट कीजिए। $1 + 4 = 5$
What are Self Help Groups? How do they work? Explain.

28. दबाव समूह और आन्दोलन किस प्रकार राजनीति पर प्रभाव डालते हैं? उदाहरणों सहित स्पष्ट कीजिए। $5 \times 1 = 5$

How do pressure groups and movement exerts influence on politics? Explain with examples.

29. तीन लक्षण A, B और C भारत के राजनीतिक रेखा-मानचित्र में अंकित किए गए हैं। इन लक्षणों को निम्नलिखित जानकारी की सहायता से पहचानिए और उनके सही नाम मानचित्र पर खींची गई रेखाओं पर लिखिए: $1 + 1 + 1 = 3$

A. वह स्थान जहाँ 1920 में भारतीय राष्ट्रीय कांग्रेस का अधिवेशन हुआ था।

B. वह नगर जहाँ जलियाँवाला बाग घटना घटी।

C. वह स्थान जहाँ नील की बागान व्यवस्था के विरुद्ध किसानों ने संघर्ष किया।

Three features A, B and C are marked in the political outline map of India. Identify these features with the help of the following information and write their correct names on the lines marked on the map :

- A. The place where the Indian National Congress Session was held in 1920.
- B. The city where the Jallianwala Bagh incident occurred.
- C. The place where the peasants struggled against the indigo plantation system.

नोट : निम्नलिखित प्रश्न केवल दृष्टि बाधित परीक्षार्थियों के लिए प्रश्न संख्या 29 के स्थान पर है?

- (29.1) उस स्थान का नाम लिखिए, जहाँ सितम्बर 1920 में भारतीय राष्ट्रीय कांग्रेस का अधिवेशन हुआ था।
- (29.2) जलियाँवाला बाग घटना किस नगर में घटी थी?
- (29.3) नील की खेती करने वाले किसानों ने बागान व्यवस्था के विरुद्ध कहाँ संघर्ष किया था?

Note: The following questions are for the **Visually Impaired Candidates** only; in lieu of Q. No. 29 :

- (29.1) Name the place where the Indian National Congress Session was held in September 1920.
- (29.2) In which city Jallianwala Bagh incident occurred?
- (29.3) Where the peasants struggled against the indigo plantation system?



30. (30.1) भारत के दिए गए राजनीतिक रेखा-मानचित्र में दो लक्षण A और B अंकित किए गए हैं। इन लक्षणों की पहचान निम्नलिखित जानकारी की सहायता से कीजिए:

2+1=3

- A. लौह-अयस्क खानें
- B. उत्तर-दक्षिण गलियारे का छोर

(30.2) इसी मानचित्र में निम्नलिखित को दर्शाइए और उसका नाम लिखिए:

- (i) गाँधीनगर सॉफ्टवेयर प्रौद्योगिकी पार्क

(30.1) On the given political outline map of India, two features A and B are marked. Identify these features with the help of the following information :

- A. Iron-ore mines
- B. Terminal station of North-South Corridor

(30.2) On the same map locate and label the following :

- (i) Gandhinagar Software Technology Park

नोट : निम्नलिखित प्रश्न केवल दृष्टि बाधित परीक्षार्थियों के लिए प्रश्न संख्या 30 के स्थान पर हैं :

(30.1) कुद्रेमुख लौह-अयस्क खानें किस राज्य में स्थित हैं?

(30.2) पूर्व-पश्चिम गलियारे के पूर्वी सिरे के स्टेशन का नाम लिखिए।

(30.3) गाँधीनगर सॉफ्टवेयर प्रौद्योगिकी पार्क किस राज्य में स्थित है?

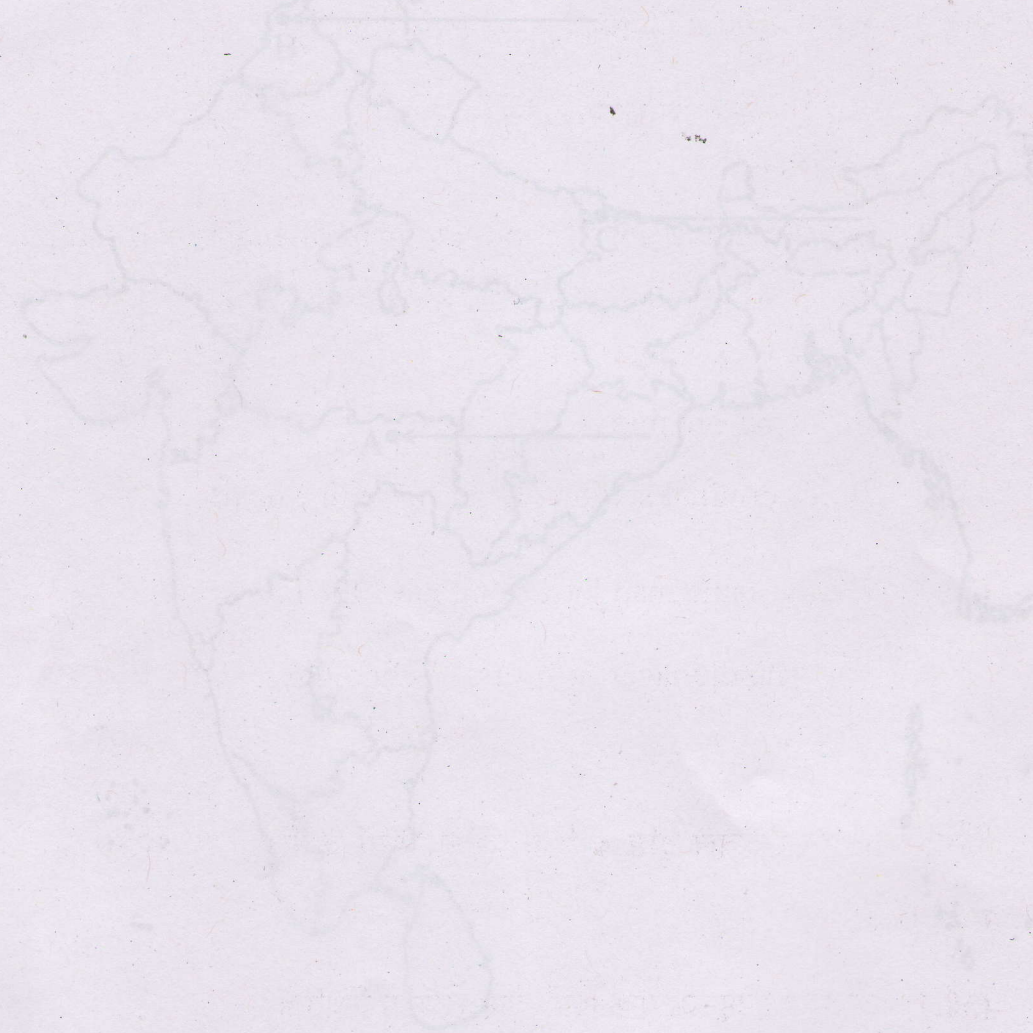


Note: The following questions are for the **Visually Impaired Candidates** only; in lieu of Question Number 30 :

(30.1) In which state are Kudremukh iron-ore mines located?

(30.2) Name the eastern terminal station of East-West Corridor.

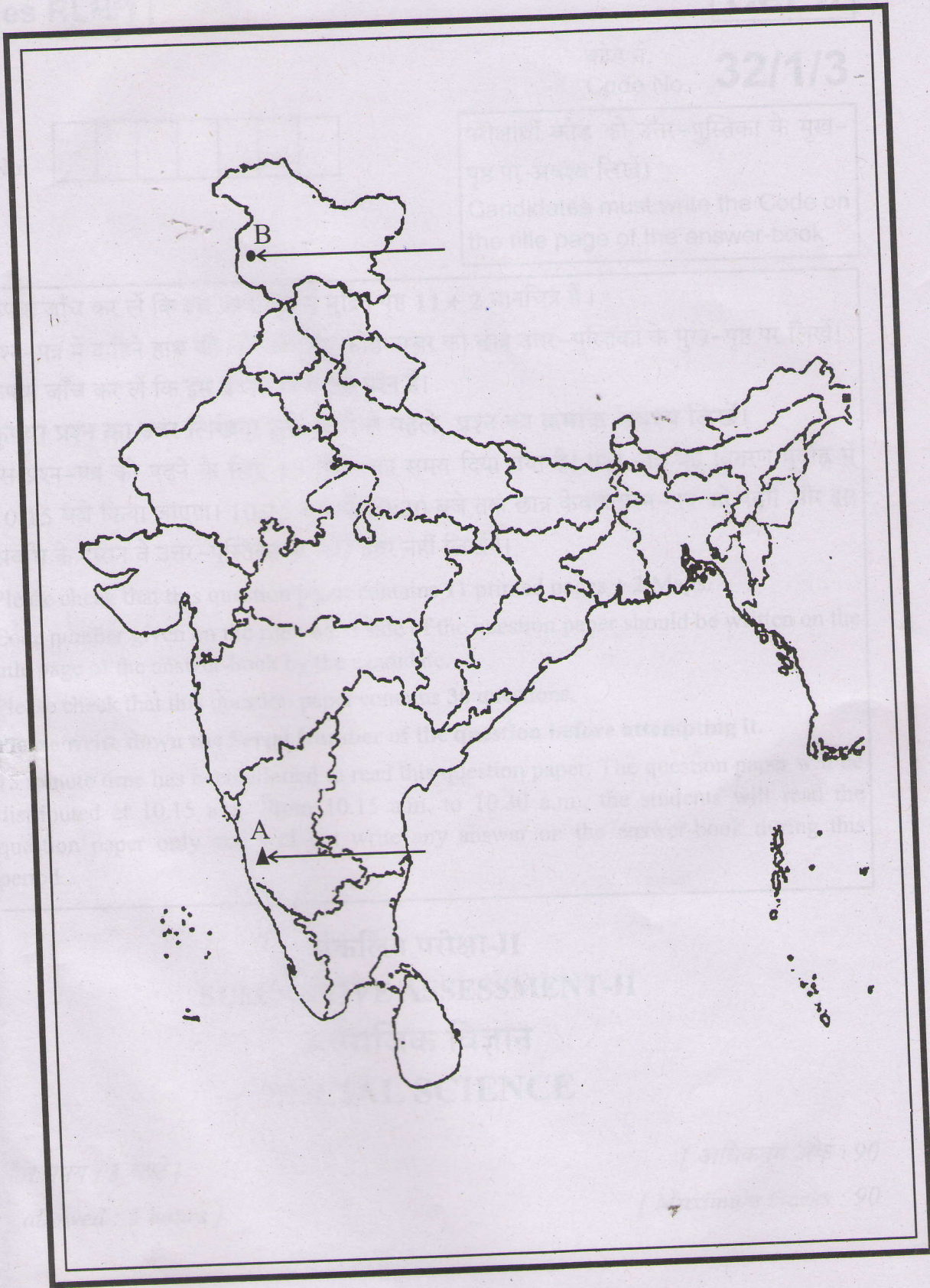
(30.3) In which state is Gandhinagar Software Technology Park located?



MAP for Q. No. 29



..... ✂ Cut Here यहाँ से काटें ✂ Cut Here यहाँ से काटें ✂ Cut Here यहाँ से काटें



32/1/3

15

P.T.O.

MARKING SCHEME SOCIAL SCIENCE (DELHI)

SECONDARY SCHOOL EXAMINATION

MARCH 2015

CODE NO. 32/1/3

Q.NO.	EXPECTED ANSWERS/ VALUE POINTS	Page No.	MARKS
1	<p>Role of FEDECOR:</p> <p>The protest against water privatization in Bolivia was led by FEDECOR and it made the government concede to all the demands of the protesters.</p>	Pg-62(D.P.)	1
2	<p>The major objective of super highways is to reduce the time and distance between the mega cities of India.</p>	Pg-82(G)	1
3	<p>The regional parties of West Bengal are:</p> <p>i.) Forward Bloc</p> <p>ii.) Revolutionary Socialist Party</p> <p>iii.) Trinamool Congress</p> <p style="text-align: center;">• Any two</p>	Pg-82(D.P.)	1
4	<p>The French Revolution led to the transfer of sovereignty from the monarchy to a body of French Citizen.</p> <p style="text-align: center;"><u>OR</u></p> <p>Vietnam was also linked to what has been called the maritime silk route. It brought goods, people and ideas. Other networks of trade connected it to the hinterlands.</p>	Pg-5(H) Pg-30(H)	1
5	<p>The Indian Government put barrier to foreign trade and foreign investment after independence to protect the producers within the country from foreign competition.</p>	Pg-64(E)	1
6	<p>National Consumer's Day: 24th December</p>	Pg-86(E)	1
7	<p>To purchase electrical goods :- ISI logo</p>	Pg-85(E)	1

8	<p>Challenge before a political party controlled by members of one family :</p> <p>Challenge of dynastic succession</p>	Pg-84(D.P.)	1
9	<p>Transformation of our markets :</p> <p>i.) There is a wide choice of goods and services before us in the market. The latest models of digital cameras, mobile phones and televisions made by the leading manufacturers of the world are within our reach.</p> <p>ii.) Every season new model of automobiles can be seen on Indian roads and the Indians are buying vehicles produced by the top companies of the world.</p> <p>iii.) A similar explosion of brands can be seen for many other goods from shirts to televisions to processed fruit juices.</p> <p>iv.) Any other relevant point.</p> <ul style="list-style-type: none"> • Any three points to be explained. 	Pg-55(E)	3
10	<p>Withdrawal of Non-Cooperation Movement in February 1922:</p> <p>i.) Gandhiji felt the movement was turning violent in many places.</p> <p>ii.) Satyagrahis needed to be properly trained.</p> <p>iii.) Some leaders were by now tired of mass struggles.</p> <p>iv.) They wanted to participate in elections to the provisional councils.</p> <p>v.) Any other relevant point.</p> <ul style="list-style-type: none"> • Any three points to be explained. 	Pg-62(H)	3x1 = 3
11	<p>Conditions in which markets do not work in a fair manner:</p> <p>i.) When producers are few and powerful.</p> <p>ii.) When consumers purchase in small amounts.</p> <p>iii.) When consumers are scattered.</p> <p>iv.) When large companies have monopoly in production of goods as they have huge wealth and can manipulate the market in various ways.</p>		



	<p>v.) Passing on false information through media and other sources to attract the consumers.</p> <p>vi.) Any other relevant point.</p> <ul style="list-style-type: none"> Any three points to be explained. 	Pg-76(E)	3x1=3
12	<p>Lack of internal democracy within parties – major challenges :</p> <p>i.) Tendency in political parties towards the concentration of power in one or few leaders at the top.</p> <p>ii.) Parties do not keep membership registers.</p> <p>iii.) They do not hold organizational meetings.</p> <p>iv.) They do not conduct internal elections regularly.</p> <p>v.) Ordinary members of the party do not get sufficient information about the happening of the party.</p> <p>vi.) Personal loyalty to the leader becomes more important.</p> <p>vii.) Any other relevant point.</p> <ul style="list-style-type: none"> Any three points to be analysed. 	Pg-83(D.P.)	3x1=3
13	<p>The textile industry occupies a unique position in Indian economy, because it contributes:</p> <p>i.) Significantly to industrial production (14 percent).</p> <p>ii.) It generates employment (35 million persons directly).</p> <p>iii.) Earns foreign exchange (about 24.6 percent).</p> <p>iv.) It contributes to a larger amount towards GDP (4 percent).</p> <p>v.) Only industry in the country which is self reliant and complete in the value chain i.e., from raw material to the highest value added products.</p> <ul style="list-style-type: none"> Any three points to be argued. 	Pg-67(G)	3x1=3



<p>14</p>	<p>Multi-party System :-</p> <p>If several parties compete for power and more than two parties have a reasonable chance of coming to power either on their own strength or in alliance with others, we call it a Multi-party system. 1</p> <p>India adopted a multi party system because :-</p> <p>i.) There is social and geographical diversity in India.</p> <p>ii.) India is such a large country which is not easily absorbed by two or three parties.</p> <p>iii.) The system allows a variety of interests and opinions to enjoy political representation.</p> <p>iv.) Any other relevant point.</p> <p>• Explain any two points. 2x1=2</p>	<p>Pg-77(D.P.)</p>	<p>1+2=3</p>
<p>15</p>	<p>Each challenge in Democracy is limited to the possibility of reforms. All the countries do not have same challenges.</p> <p>i.) Carefully devised changes in law can help to discourage wrong political practices.</p> <p>ii.) Democratic reforms are to be carried out by political activists, parties, movement and political conscious citizen.</p> <p>iii.) Political participation by ordinary citizen should be there.</p> <p>iv.) Democratic movements, citizen's organization and media should play an important role.</p> <p>v.) Empowerment of people through laws, eg., RTI.</p> <p>vi.) Any other relevant point.</p> <p>• Any three points to be explained.</p>	<p>Pg-108(D.P.)</p>	<p>3x1=3</p>
<p>16</p>	<p>The mining activity is injurious to the health of the miners and environment:-</p> <p>i.) The dust and noxious fumes inhaled by miners make them vulnerable to pulmonary diseases.</p> <p>ii.) The risk of collapsing mine roofs.</p> <p>iii.) Inundation and fires in coalmines are a constant threat to miners.</p>		

	<p>iv.) The water sources in the region get contaminated due to mining.</p> <p>v.) Dumping of waste and slurry leads to degradation of land, soil and increase in stream and river pollution.</p> <p>vi.) Any other relevant point.</p> <ul style="list-style-type: none"> Any three points to be explained. 	Pg-56(G)	3x1=3
17	<p>The following steps can be taken for saving energy :-</p> <p>i.) Judicious use of energy resources.</p> <p>ii.) Use of public transport/ car pool.</p> <p>iii.) To use bicycle for short distances.</p> <p>iv.) Switching off electrical gadgets when not in use.</p> <p>v.) Regular cleaning of gas burners and switching off the gas regulator when not in use.</p> <p>vi.) Avoid using refrigerator/ A.C. when not needed.</p> <p>vii.) Creating awareness in neighbourhood with catchy slogans.</p> <p>viii.) As India has been blessed with abundance of sunlight, water, wind and biomass, we must use these to overcome present day energy crisis.</p> <ul style="list-style-type: none"> Since it is a value based question, children's view reflecting local conditions and additional points may be given due consideration. 	Pg-63(G)	3x1=3
18	<p>Necessity for the banks and cooperative societies to increase their lending facilities in rural areas:</p> <p>i.) Dependence on informal sources of credit reduces.</p> <p>ii.) To provide more loan facilities to rural households.</p> <p>iii.) To save rural people from exploitation.</p> <p>iv.) It is important that the formal credit is distributed more equally so that the poor can benefit from the cheaper loans.</p> <p>v.) The bank and the cooperative societies have to increase the lending facilities to improve the livelihood of the people in the rural areas.</p> <p>vi.) Any other relevant point.</p>	Pg-50(E)	3x1=3



	<ul style="list-style-type: none"> Any three points to be explained. 		
19	<p>The events of French Revolution which had influenced the people belonging to other parts of Europe:</p> <p>Students and other members of educated middle class began to set up Jacobin clubs. Their activities and campaigns prepared the way for the French armies. The French armies began to carry the idea of nationalism abroad. Thus, created a sense of collective identity.</p> <ul style="list-style-type: none"> To be assessed as a whole <p style="text-align: center;"><u>OR</u></p> <p>The major protest erupted in Saigon Native School in 1926, in Vietnam, when a Vietnamese girl sitting in the front seat was asked to move to the back for a local French student to occupy the front bench to which she refused and was expelled by the Principal. When angry students protested, they too were expelled, leading to a further spread of open protests. Seeing the situation getting out of control, the Government forced the school to take the students back. The Principal reluctantly agreed after warning the students.</p> <ul style="list-style-type: none"> To be assessed as a whole 	Pg-5(H)	
		Pg-36(H)	3
20	<p>The Congress was reluctant to include the demands of industrial workers in its programme of struggle:</p> <p>i.) The industrialists came closer to the Congress, but the workers stayed aloof.</p> <p>ii.) Congress felt this would alienate industrialists.</p> <p>iii.) It would divide its anti imperial forces.</p> <p>iv.) Civil Disobedience Movement would be weakened.</p> <p>v.) Any other relevant point.</p> <ul style="list-style-type: none"> Any three points to be analysed. 	Pg-66(H)	3x1=3



21	<p>Unification of Britain:</p> <p>In Britain the formation of the nation states was the result of long drawn out process. Primary identities of the people were ethnic ones. All ethnic groups such as English, Welsh Scot or Irish had their own cultural and political traditions. The English nation steadily grew in wealth and power. It was able to extend its influence over the other nations. The Act of Union 1707 between England and Scotland resulted in the formation of the United Kingdom of Great Britain.</p> <ul style="list-style-type: none"> To be assessed as a whole. <p style="text-align: center;"><u>OR</u></p> <p>‘Scholar’s Revolt’ of 1868 against the spread of Christianity in Vietnam:</p> <p>Christianity introduced by French missionaries was intolerant. An early movement against French control and the spread of Christianity was the ‘Scholar’s revolt’ in 1868. This result was led by officials at the imperial court angered by the spread of Catholicism and French power. They led a general uprising in Ngu An and Ha Tein provinces where over 1000 catholics were killed. The French crushed the movement but this uprising served to inspire other patriots to rise up against them.</p> <ul style="list-style-type: none"> To be assessed as a whole 	Pg-22(H)	5
22	<p>Functions of political parties:</p> <ol style="list-style-type: none"> i.) Parties contest elections. ii.) They put forward policies and programmes. iii.) Parties play a decisive role in making laws. iv.) Parties form and run government. v.) Defeated parties in the election play its role of opposition to the parties in power. vi.) Parties shape public opinion. vii.) Parties provide people access to government machinery and welfare schemes. <ul style="list-style-type: none"> Any five points to be described. 	Pg-73,74(D.P.)	5x1=5



23	<p>The factors affecting the location of an industry:</p> <ul style="list-style-type: none"> i.) Availability of raw material ii.) Labour iii.)Capital iv.)Power v.) Market vi.)Transport vii.)Any relevant point. <ul style="list-style-type: none"> • Any five points to be explained. 	Pg-66(G)	5
24	<p>The large companies manipulate the market in various ways:</p> <p>Large companies with huge amount of wealth, power and riches can manipulate the market in various ways. At times false information is passed on through the media and other sources to attract consumers. For example, a company for years sold powder milk for babies all over the world as the most scientific product claiming this to be better than mother's milk. It took years of struggle before the company was forced to accept that it had been making false claims. Similarly, a long battle had to be fought with court cases to make cigarette manufacturing companies accept that their product could cause cancer.</p> <ul style="list-style-type: none"> • To be explained with examples. 	Pg-76(E)	5x1=5
25	<p>The physiographic and economic factors that have influenced the distribution pattern of the railway network in our country:</p> <p>Physiographic factors:</p> <ul style="list-style-type: none"> i.) Terrain : a.) Mountain <ul style="list-style-type: none"> b.) Plateau c.) Plain d.) Desert <p>Economic factors:</p> <ul style="list-style-type: none"> i.) Agricultural development ii.)Industrial development <ul style="list-style-type: none"> • Any five points to be explained in relation to population. 	Pg-85(G)	5x1=5



26	<p>Nationalism spreads when people begin to believe that they are all part of the same nation. The sense of collective belonging came partly through the experience of united struggles. Variety of cultural processes through which nationalism captured people's imagination. History and fiction, folklore and songs helped with promotion of nationalism. Literature also helped to arouse national feelings. The ideas of nationalism also developed through the celebration of regional festivals. As the national movement developed nationalist leaders became more and more of icons and symbols in unifying and inspiring in them a feeling of nationalism.</p> <ul style="list-style-type: none"> To be assessed as a whole. 	Pg-70(H)	5x1=5
27	<p>Self help groups are the organization of the rural poor, in particular women to pool their savings and provide loans to their members. 1</p> <p>Work of self help groups:</p> <ol style="list-style-type: none"> Generally self help groups consist of 15-20 members. Members belong to one neighbourhood. They meet regularly. Their savings varies from Rs. 25-Rs. 100 or more. Only members can take loans from the group itself. The group charges interest less than the money lenders. All the important decisions regarding savings and loans are taken by the members of the group. The group is collectively responsible for the repayment of the loan. The regular meeting of the group provides a platform to discuss and act a variety of social issues such as health, nutrition and domestic violence etc. <ul style="list-style-type: none"> Any four points to be explained. 4 	Pg-51(E)	1+4=5
28	<p>Pressure groups and movements exert influence on politics in various ways:</p> <ol style="list-style-type: none"> Pressure groups and movements try to gain public support and sympathy for their goals and activities. They often organize protest activities. 		



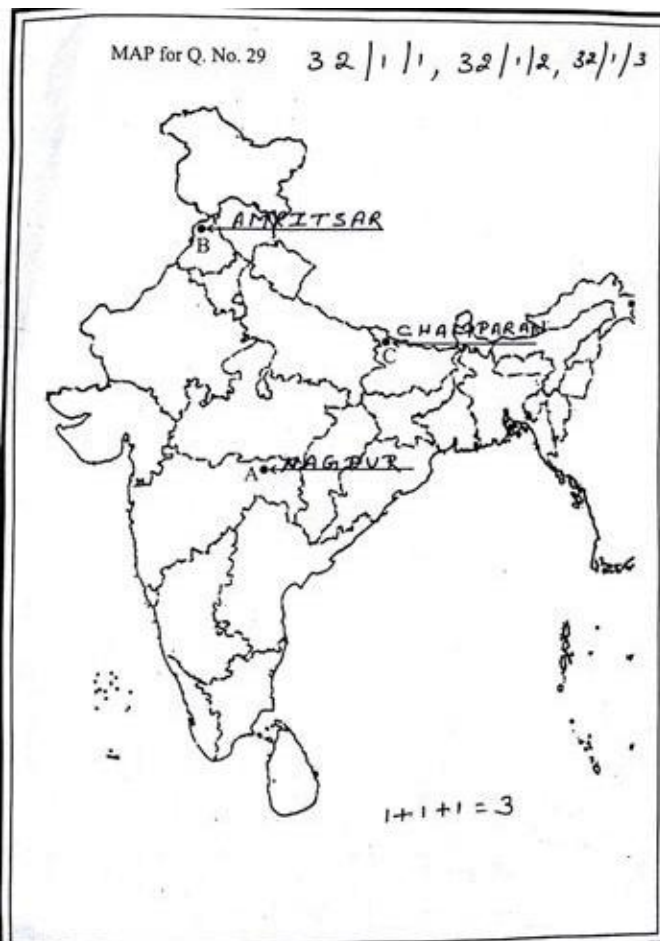
- iii.) Business groups often employ professional lobbyists.
- iv.) The pressure groups are either formed or led by the leaders and political parties.
- v.) Sometimes political parties grow out of movements.
- vi.) In most cases the relationship between parties and pressure groups is not so direct.

Pg-67(D.P.)

5x1=5

- Any five points to be explained.

29



For blind students:

- 29.1 Kolkata/Calcutta
- 29.2 Amritsar
- 29.3 Champaran

1x3=3

30



For blind students:

- 30.1 Karnataka
- 30.2 Silchar
- 30.3 Gujarat

1x3=3